

### RAVENSCAR HOLIDAY - SEPTEMBER 2018

#### **Sunday 16<sup>th</sup>**

It was a dry bright day for the journey up to Ravenscar with great views and interesting places to view on the way. All thirteen of us enjoyed the wonderful views that met us at the hotel which is perched on top of the cliffs. That first evening we saw an amazing sunset from the dining room. We also met up with our leaders Belinda and Gerald.

#### **Monday 17<sup>th</sup>**

It was a lovely sunny morning as both groups started their walks from the hotel with Whitby being their destination. Shortly after setting off along the Cleveland Way our first point of interest was the remains of the Alum Works which was a thriving industry along the Yorkshire Coast in the 16<sup>th</sup> century. Our next excitement was to see three peacocks which were the object of a photograph. Poor Sally never got the photo as a horse then decided to bite her and to make matters worse stood on her camera. First Aid administered we were on our way again only to find Mike's trousers needing attention so two shoe laces were used to stop his trousers from falling down.



Passing through Boggle Hole we carried on to Robin Hood's Bay a tiny fishing village with narrow streets and quaint cottages. There is also a café that makes delicious take away sandwiches. Another up and we are again on

the coastal path passing a special pole – a rocket post. These were once used by the coastguard to practise rescuing shipwrecked sailors by 'breeches buoy'. We then turned inland through a caravan park to reach Hawsker where we caught a bus to Whitby. We did have lookouts to let us know when the bus was on its way. Arriving at the same time as the first group we all enjoyed a cup of tea, and some a cream tea!



#### **Tuesday 18<sup>th</sup>**

We all started with a coach ride to Sleights Moor where it was wet, windy and chilly. We set off with the longer group turning left and the shorter group going straight on. As this was a circular walk we expected to see each other at some point on route. The moors did not have a grand display of heather due to the hot summer but we did see butterflies, a large hairy caterpillar, a small dark frog and wild flowers. (Fleabane being the noticeable one). As we approached May Beck a phone call informed us of the sad plight of Diana who had had a bad fall and the Mountain Rescue would be taking her to hospital. We were then in the pretty wooded area where the footpath ran alongside May Beck. This led us to Falling Foss Waterfall and Midge Hall which had a café in the garden serving delicious soup, bacon butties and Paninis. This was a delightful area, almost magical, and in the middle of nowhere, with covered seating areas where we enjoyed lunch. We also caught up with the other group here who stopped for refreshments and cake! A short walk took some to the Hermitage, a cave hewn out of a rock with seats on top. Continuing on we walked over farmland, back onto the moors and returning to where we had started. That evening we were all pleased to see Diana who had her arm in a sling as she had broken her humerus. The following day we found out the incident was reported in the Whitby Gazette.

#### **Wednesday 19<sup>th</sup>**

This morning with reports of very high winds our coach took us to Sandsend for us all to walk as one group. We passed spoil heaps from old Alum works and then on to the old Scarborough-Whitby Railway line walking again on the Cleveland Way coastal path. After being buffeted by the winds we came down on to the beach at Runswick Bay, another pretty fishing village, for lunch. Sue and Belinda could not resist the opportunity to paddle in the sea. Stronger winds after lunch made it impossible for anyone to carry on along the coastal path so we all ended up catching the bus to Staithes, where

some enjoyed tea and 'Coble cake' (an old family recipe).

#### **Thursday 20<sup>th</sup>**

Having a free day gave us time to walk down the cliff path to view a large number of seals basking on the rocks below the hotel.

Childhood memories took Steve and Rosemary to Scarborough. Steve at the age of 7 had come to Scarborough for his holidays so he wanted to revisit Peasholm Park, the model railway and 'The Hispaniola' (it is a ¼ scale replica of an eighteenth century schooner) which took excited passengers to Treasure Island – a small piece of land on Scarborough Mere – where gold doubloons could be found.

Tim, being a rail enthusiast, could not resist enjoying a ride on a steam train on the North Yorkshire Moors Railway which goes from Whitby to Pickering.

The rest of us headed over the moors to Helmsley a pretty market town with a walled garden that served delicious lunches in the renovated greenhouse. Heavy rain curtailed activities which sent us back to the hotel some calling at a National Trust property, Nunnington Hall, on the way.

#### **Friday 21<sup>st</sup>**

Today we all had a ride on the steam train from Whitby to Goathland from where the walk started. Walking through the village we saw signs that it was the village of 'Aidensfield' in the TV series 'Heartbeat'. On display were the Police Panda car and a Ford Anglia car, bringing back memories from the Sixties. Turning on to the moors we past Wheeldale Lodge which had been a former YHA hostel. Crossing Wheeldale Beck we climbed up to the Roman Road. Along this path we were also walking the Lyke Wake Walk (a challenging 40 mile route from Osmotherley to Ravenscar to be completed on foot within 24hrs). We then carried on along to Hazelhead Farm, through woods and down to Beck Hole being 10 minutes too late for refreshments at Birch Hall Inn. Climbing up again, through fields, and clamouring over rocks we reached Mallyan Spout, a pretty waterfall. A final up took us to the Mallyan Spout Hotel and back into the village and our bus back to Ravenscar.

#### **Saturday 22<sup>nd</sup>**

With the promise of dry weather and some sunshine we all set off from the hotel and joined the Cleveland Way, this time heading south

towards Scarborough. We soon passed another Rocket Post and then a Second World War Radio Defence Station. A landslide closed the coastal path and we were diverted inland where we joined the old railway line until we reached The Hayburn Wyke Hotel where we rejoined the Cleveland Way again. Carrying on along the coast we saw surfers enjoying the waves. We then turned inland along to the village of Cloughton where we reached an old Railway Station converted into a café serving refreshments. After lunch we caught the bus into Scarborough. Exploring we visited St Mary's Church where Anne Bronte (who died at 28yrs old) is buried, up then to the castle then down to the Harbour and along to South Bay. Now up again into the town and our bus back. Steve and Rosemary again managed a delicious cream tea. We arrived back in time to go for a swim before we meet for our entertainment. Diana had gently persuaded a few to recite poetry, tell short stories, or sing which was a super way to end a very enjoyable holiday.

Huge thanks go to Ann A for organising another superb holiday. A big thank you to our two leaders for a good programme of walks and finally to everyone for making it such an entertaining week. Some of us are now looking forward to the next holiday on the Amalfi coast in March 2019.

Margaret T

#### **GROUP HOLIDAY SEPTEMBER 2019**

##### **MESSAGE FROM ANN**

I am in the process of sorting out a group holiday to St. Ives in September 2019, either the 7th or 14th with Ramblers holidays, grade 4. I know this is some time in advance but in order to get the rooms we need I have to start now. The price will be somewhere between £735 - 775 with no single supplement. I'm hoping to reserve 10 single rooms and 6 doubles so if you are interested please let me know as I will allocate rooms on a first come first served basis. You can view the holiday on their website although all the details may not be on there as the brochure isn't out yet.

Contact Ann on  
[holidays@southcotswoldramblers.org.uk](mailto:holidays@southcotswoldramblers.org.uk)  
or on 01453 839089.

## GROUP VOLUNTEERS 2018 -19

### Chairman:

Richard 01453 762373

chairman@southcotswoldramblers.org.uk

### Vice Chairman:

Mike 01453 873625

mike@southcotswoldramblers.org.uk

### Group Secretary:

Andrew 01452 857958

groupsecretary@southcotswoldramblers.org.uk

### Group Treasurer:

Brian W 01453 872220

treasurer@southcotswoldramblers.org.uk

### Membership Secretary:

Mike 01453 873625

membership@southcotswoldramblers.org.uk

### Publicity Officer:

Vacant

### Without portfolio:

Diana

### Website: Mike & Sally

website@southcotswoldramblers.org.uk

### South Cots Newsletter: Sally

newsletter@southcotswoldramblers.org.uk

### Footpath Chairman and Footpath Secretary:

Bob 01453 545752

footpaths@southcotswoldramblers.org.uk

### Footpath Committee Minutes Secretary:

John C 01453 845574

footpaths@southcotswoldramblers.org.uk

### Footpath Clearance

Bob

### Footpath Committee Member:

Penny F

### Led Walks Programme Co-ordinator:

Mike 01453 873625

mike@southcotswoldramblers.org.uk

### Led Walks Collectors for Mar - June 2019:

John G 01452 728760 Weekend Walks

John L 01452 500143 Start the Week walks

Ann 01453 839089 Midweek walks

Karen 01453 545824 Thu evening walks, May-Jun  
(volunteer needed for Jul - Aug)

(Please collect date offers in December, details will  
be needed no later than 25 January)



A moment to pause. Breathing in clear air.  
Sharing interests and conversations as you  
ponder the hills ahead. We have your passion  
for exploring worldwide and in the UK.

Book a great value holiday: [ramblersholidays.co.uk](http://ramblersholidays.co.uk) or call 01707 386804



Choose any of our holidays and we'll  
contribute funds through **The Walking  
Partnership** to your group. Just tell us  
their name when you book.

Walking holiday parts



**Ramblers**  
Walking  
Holidays

## **Inn or Out .... Or To Eat or not to Eat!!!**

Like many of the members of South Cotswold Ramblers, I have lead many walks both with Ron and with Sally. Over the years we have generally though not always tried to start and finish from a public house or similar hostelry in order that those who wish may have a snack or indeed a full meal after the walk .. thereby piling on the calories they have just shed!!!!

However on at least three occasions over the past year different pubs have been less than enthusiastic or very negative about hosting a group. There seem to be a variety of reasons for this: one being that a certain pub wanted a £10 deposit for all those expected as they said they had been badly let down by ramblers (not SC I hasten to add) in the past. Clearly as we do not ask people to sign up ahead of the walk that was not possible, I was also unwilling to shell out up to £200 on speculation of the numbers staying.

Others have said that if they reserve aside up to 15 or so covers which may not all be taken – they are turning away other business and clearly for smaller pubs this is indeed a problem. Another reason cited for being unwilling to host us is that even though we always order before walking some feel that this is not far enough ahead given the number of their staff. It should be said that some pubs cope magnificently. Of course even now not all walks do start and finish at a pub although this means a search for safe and suitable parking for what might be up to 20-25 vehicles. However I did wonder if it was worth considering people signing up for walks if they did start or finish at a pub stating as to whether they were going to eat there? This would allow the leader to ring ahead with numbers the night before? This might solve the growing problem. This is intended to stimulate debate rather than to suggest a way forward.

Write to the Editor not me with your views on a postcard please!!!!  
Ros

## **IMPORTANT —PAYMENT CHANGES FOR ANNUAL LUNCH ETC.**

There have been changes that are going to affect the way we pay for things like the Annual Lunch (Menu overleaf on page 5).

As you will see from the Treasurer's report on page 16, the bank will charge us a small fee (which we will have to pass on to you) for those members who pay by cheque, as opposed to those who do a direct bank transfer. I have provided 2 different sets of instructions below for ordering and paying, depending on which method you use. Brian's Treasurer's report give more guidance if you are unfamiliar with bank transfers. Any problems , contact me, Sally, [sally@southcotswoldramblers.org.uk](mailto:sally@southcotswoldramblers.org.uk) 01453 872729

### **ACTION IF PAYING BY BANK TRANSFER**

#### **1) By 1 December**

Transfer £25.70 per person to account

**Unity Bank**

**Account number: 20240918.**

**Bank sort code: 608301.**

**Account name: South Cotswold  
Ramblers Holiday Account.**

**Reference: YOUR NAME lunch**

Use your NAME AS A REFERENCE (otherwise I won't know who has paid). **At the same time, email me [sally@southcotswoldramblers.org.uk](mailto:sally@southcotswoldramblers.org.uk) to say you have paid.**

#### **2)By 31 December email me your food choices**

You can use my hotmail email instead if you prefer.

### **ACTION IF PAYING BY CHEQUE**

#### **By 1 December**

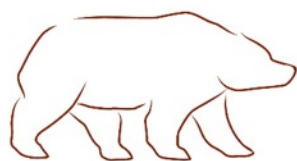
Complete the rest of this form and post it to Sally, 23 Bownham Park, Rodborough Common, Stroud, GL5 5BY with a **cheque payable to South Cotswold Ramblers for £25.70 per person +30p for bank charge.**

Names of diners.....

Tel/Email address.....

our choices of food (please make it clear who is having what , if more than one person)





## THE BEAR OF RODBOROUGH HOTEL

**Saturday 26 January 2019 12.30 for 1pm  
(in the Terrace Room)**

### **Annual Lunch Menu**

#### **Starters**

Carrot and Coriander Soup with Herb Croutons

~

Somerset Brie and Beetroot Tart, Caramelised Onion Chutney

~

Ham Hock and Pea Terrine, Piccalilli, Toasted Brioche

~

Smoked Salmon, Capers, Crème Fraîche

#### **Mains**

Traditional Roast Turkey, Bacon Wrapped Chipolata, Roast Potatoes,  
Sage and Apricot Stuffing, Turkey Jus

~

Roast Loin of Pork, Bubble and Squeak, Apple Compote,  
Pork Jus

~

Pan Fried Salmon Fillet, Garlic and Chive Potatoes, Kale,  
Lemon Hollandaise

~

Four Cheese Ravioli, Rich Tomato and Thyme Sauce, Rocket, Parmesan

#### **Desserts**

Apple and Winter Berry Crumble, Vanilla Custard

~

Traditional Christmas pudding, Brandy Sauce

~

Caramelised Orange Cheesecake, Fruit Coulis, Orange Sorbet

~

Selection of Local Ice creams

~

Tea and Coffee with Mince Pies

£25.70 per person

# Exhibition follows end of swimming challenge

A STROUD man is holding a party and exhibition to celebrate the end of his marathon challenge.

Dominic Thompson, a professional jazz musician and producer, finished his task of swimming 21 lakes at the base of Mount Snowdon on August 31.

He has been raising money for the Sue Ryder hospice in Leckhampton who looked after Dom's father, Denys, before he died.

Dom, father to Kit, 6, and Nancy, 9, said: "It has been a hugely emotional journey but a hugely beneficial one, full of learning, full of healing.

"Spending eight weeks on the road on your own provides a lot of thinking time. So many people's lives are affected by Cancer, in one way or another.

"I even had a donation from a couple and their dog who paddled past me on a Kayak on Llyn Gwynant, in Snowdonia."

So far Dom has raised £3338.

The 21 Lakes Closing Party will be at The Stroud Valleys Art

By Huw Mabe

Space on Saturday, October 20.

This will be a dance music event from 9pm until late featuring DJ's Situation Sounds and The Peaceful Ones. Tickets are £6 in advance and £8 on the door.

The Exhibition will be held at The Stroud Subscription Rooms, on Saturday, October 27 from 10am-5pm and Sunday, October 28 from 12pm-3pm.

Entry is free and all 21 images will be available to buy, with the centrepiece being available through sealed bids, starting at £21. To donate visit [justgiving.com/fundraising/21lakes](http://justgiving.com/fundraising/21lakes).

## CONTACT

01453 769414

[huw.mabe@newsquest.co.uk](mailto:huw.mabe@newsquest.co.uk)

Twitter: @huwmabeNQ

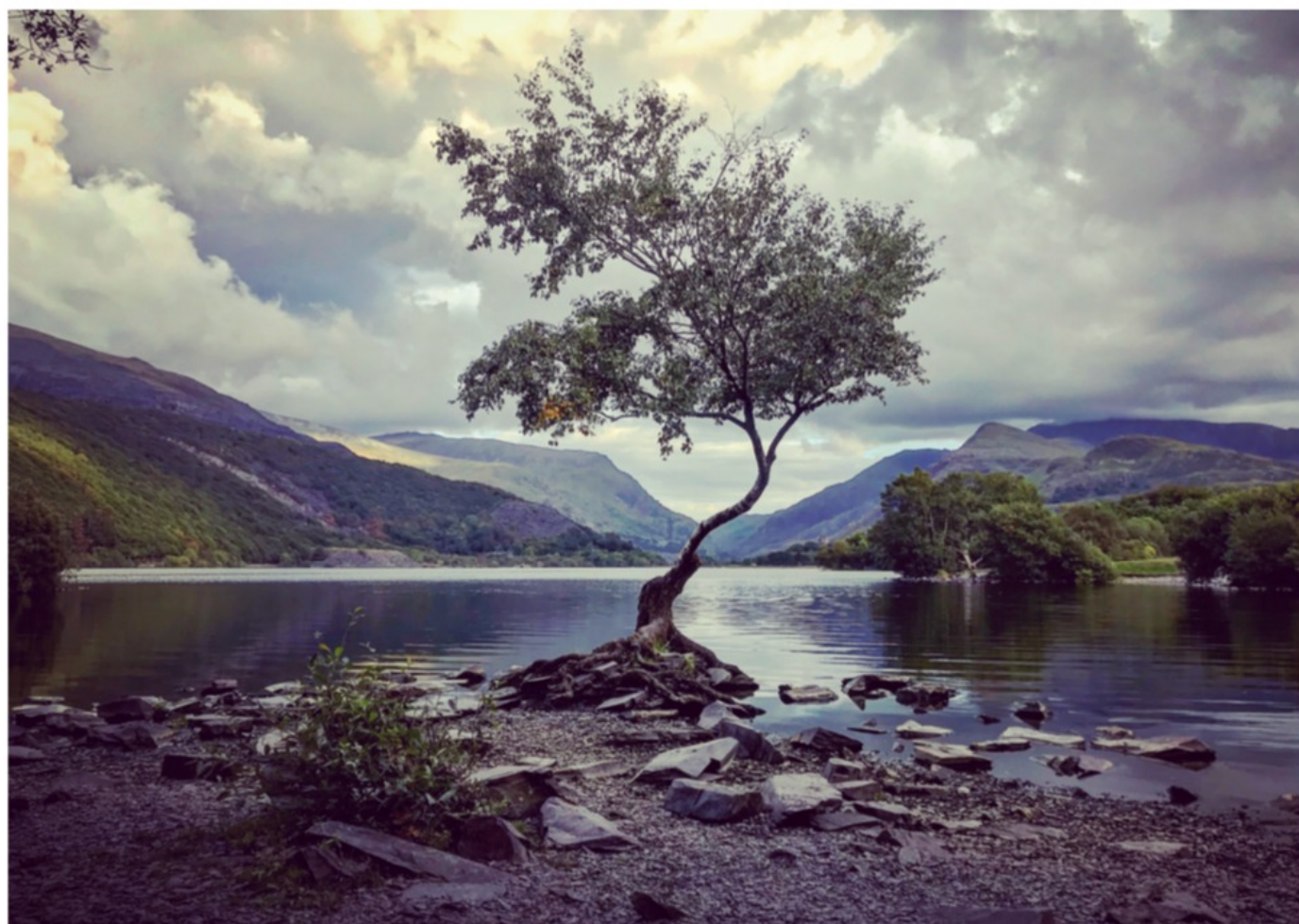


Llyn Idwal, Snowdonia. Lake 19 of the marathon swimming challenge



**Dom (son of SC Rambler Denys) taking photos of Llyn Idwal Snowdonia.**





# 21 Lakes: An Exhibition

A closing document to the  
21 Lakes Wild Swim Challenge, 2018.  
By Dominic Thompson.

Saturday 27<sup>th</sup> October 10am-5pm  
Sunday 28<sup>th</sup> October 12pm-3pm

The George Room  
**Stroud Subscription Rooms**  
George Street, Stroud, GL5 1AE

[www.justgiving/fundraising/21Lakes](http://www.justgiving/fundraising/21Lakes)

## **Guidelines for Hares and Tortoises**

### **Leaders and Back Markers**

It would be prudent for the leader to be aware at all times of the whereabouts of the back marker (shepherding any stray wanderers). There have been several occasions where a member has stopped for some comfort (not Southern) and the rest of the troupe have blithely carried on and over the hill to disappear into the woods. Leaving a bemused back marker and newly-comforted member wondering which way to go. Fortunately, there have been no losses as yet.

A two-way radio communications device would be most helpful as technology has moved on from two Heinz Baked Bean cans (washed) and a length of string. This doesn't work around corners.

### **Banana Breaks**

It would also be helpful if the time of the length of the break was calculated from the moment the back marker and charges arrived at the rest stop. There have been moments when the back marker has arrived, removed the back pack and just about to pour a drink when those immortal words "Two Minutes" ring out loud and clear. Yes, a bonus for those at the front who have time not only to digest the banana but can allow their coffee to cool down sufficiently to be able to sip with ease thus avoiding burnt lips and tongue.

### **Stiles and Gates**

Some of us are not as agile as we were last week. Climbing over a locked gate or a badly-maintained stile, at times, can present a problem. It would be nice if the leader observed a modicum of charity and waited until the less agile were over the obstacle before setting off at a pace.

### **STW Walks**

A leisurely walk should not be a race to the pub from whence we started, a casual saunter with time to socialise, stop and admire the view or smell the flowers is the ideal way to prepare oneself for the travails of the coming week.

### **And Finally...**

#### **The Back Marker**

The Back Marker, as the term suggests, should theoretically stay at the rear of the group, like a shepherd, watching out for any waifs and strays and to make sure that anyone stopping for a comfort break has not been eaten by wolves or a stray bear (especially around the Woodchester area.)

To echo that immortal phrase "I counted them out and I counted them all back in." Most of them anyway - OK we're allowed 10% losses – aren't we?

Happy rambling

*John L*





### ORCHESTRAL CONCERT

The next concert is on 24th November 2018 at 7.30pm at Holy Trinity Church, Trinity Road, Stroud (near the hospital).

#### **Programme:**

**Rossini: Overture: The Barber of Seville**

**Elgar: Cello Concerto Soloist: Rebecca Mc Naught**

**Dvorak: Symphony no. 6**

Listen to extracts at [www.stroudsymphony.org.uk](http://www.stroudsymphony.org.uk).

Mike will be selling tickets on walks or you can order below or at Stroud Tourist Information Office (01453 760960) or pay on the door.

Tickets £11.00 (concessions £9.00)

(This includes a £1.00 reduction if purchased prior to the evening of the concert)

Sat 24 November 7:30 pm at Holy Trinity Church, Stroud (next to the hospital with parking opposite)

To Mike Garner, Southcot, The Headlands, North Woodchester, Stroud GL5 5PS. Please send me the following tickets: ..... @ £11 / ..... concessions @ £9/ ..... accompanied children under 14 free.

I enclose a cheque for £.....payable to Stroud Symphony Orchestra and a Stamped Addressed Envelope for the despatch of tickets.

Signed .....

Please print your name, phone number and, if possible, email address below.

Name.....

Tel no:.....

Email address:.....

If you would like to put anything in the next newsletter which goes out in February, please send it to [newsletter@southcotswoldramblers.org.uk](mailto:newsletter@southcotswoldramblers.org.uk) by January 5th

#### **Going away with Ramblers Holidays?**

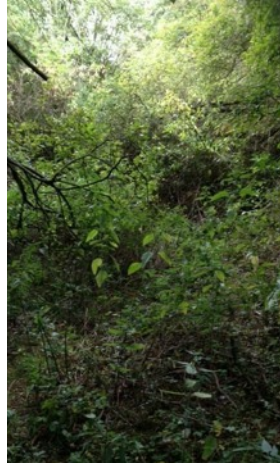
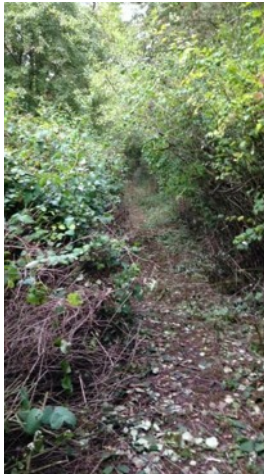
We receive a sum of money for Group Funds from Ramblers Holidays where members taking a holiday with them have nominated South Cotswold Group. If you ever forget to tell them when booking, there is still time if you contact them before you go. By your doing so, they will donate £10, £20 or even £30 per person to our funds to be used to benefit walkers.

For more info, click the link to Walking Partnership on our Messages page.

**ALL AGM STUFF IS ON PAGE 11 ONWARDS. AGM SATURDAY 17 NOVEMBER 2018 AT RODBOROUGH TABERNACLE STARTING AT 1pm. OFFERS OF CAKES PLEASE TO HEATHER ON 01453 873625.**

## Footpath clearance work by John G, Alex and Graham for John's 9th January 2019 walk.

Mike gives them credit for this on the walks programme!



### **A Lock-out**

Like most double garages, ours has room for only one car, the rest of the space being taken up by tools, old paint tins and other paraphernalia. Metal racks line one wall housing all sorts of junk contained in multiple open metal drawers, many of which have not been examined for years. In the back of the garage is a small window which was left half open through most of last winter. In the late spring, I closed the window not foreseeing the consequences of this simple act.

In the summer, I was searching for a bolt of a specific size to fix the allotment gate and pulled out one of the metal drawers not examined for ages. In the back third of the drawer was pile of leaves and I thought, "How did they get there? Then all was revealed. Nestled in the leaves was a beautiful nest and inside the nest were three exquisite eggs. A poor mother robin must have been able to get in through the open window in the early spring, laboured to gather leaves, build the nest and lay the eggs but, on returning one day, found her self locked out, separated from her precious possessions forever. It brought a tear to the eye of even a hardened cynic.

*Brian*

### **What a Sumner!**



## IKEA

We're off to IKEA  
Which has all sorts of gear  
From flat packs to plate racks  
And some odd little knick knacks

The yellow brick road lies before us  
Carefully staged to implore us  
To choose one of these — to buy one of those  
Do we need a new PAX for our out-of-date  
clothes?

Halfway around and losing the mood  
Then that welcoming sound  
From a gabbling throng  
In a queue which is longing for food

Swedish meatballs chips and gravy  
Or gravadlax — Maybe  
Chattering mothers and grannies  
With crying out loud babies

To the checkout till and paying the bill  
Eighty three pounds — What? Astounded  
We only went for some night lights  
For the garden on light nights

But we saw some other stuff – sort of  
That we thought we were short of  
Like a shelf for the cook books  
Oh! and a packet of cup hooks – satin finish –  
not chrome

Then that long journey home  
In the cold pouring rain  
Vowing once more

Never again

*John L*

## SOUTH COTSWOLD RAMBLERS ANNUAL GENERAL MEETING – 17 NOV 2018 @ 13:00

### AGENDA

1. Welcome by the Group Chairman, Richard Davis.
2. Apologies for absence.
3. Approval of the minutes of the 2017 AGM (see next page).
4. Matters arising not likely to be covered in reports below.
5. Consideration and adoption of the 2017 – 2018 Reports:
  - a) Chairman's Report
  - b) Footpath Chairman's Report
  - c) Treasurer's Report (available at the meeting or send a SAE to the Group Secretary)
6. Election of Officers and Committee Members (posts as last year, PTO)
7. Appointment of Honorary Auditor
8. Motions of which notice has been received by 31 August 2018
9. Any other business notice of which has been given in writing to the secretary prior to the meeting.

Following the formal meeting there will a discussion open to all members.



## **MINUTES OF THE ANNUAL GENERAL MEETING 2017**

Before the meeting started a minute's silence was observed in memory of Denys Thompson who sadly died earlier in the year. He will be greatly missed.

Everyone was welcomed by the Chairman, Richard Davis.

### **1. Present**

Richard Davis (Chairman), Mike Garner (Vice-Chairman), Andrew Hawkins (Secretary) , Brian Witcombe (Treasurer), Bernard Smith, Penny Fernando, John Geoghegan, Jim White, Caroline White, Patrick Marks, Angela Marks, Bernard Gill, Diana Davis, Heather Garner, Anne Eamer, Trish Lane, Goff Lane, Jenny Sawtell, Jacqui Pycroft, Brian Ruther, Ann Ruther, Bob Frewin, Peter Jones, Derek Trubody, Colin Boosey, Sheelagh Witcombe, Janet Williams, Sarah Booth, Eddie Tottle, Heather Stopher

### **2. Apologies**

Karen D'Amico, Tony D'Amico, Steve Priddey, Rosemary Byrne, Sheelagh Collier, Jill Stuart, Keith Eyles, Sally Davis, Ann Adams, Olivia Gunn, James Skinner, Linda Skinner, Janet Hale, Sue Jones

### **3. Agreement of the Minutes of 2016 AGM**

The minutes were approved as accurate and signed by the Chairman, Richard Davis.

### **4. Matters Arising**

There were no Matters arising from the previous meeting.

### **5. Annual Reports**

#### **5a Chairman's Report**

- Richard Davis presented his report (printed in the Newsletter).
- Cirencester Group has had a call from Longfield Hospice Care. They are looking at better bereavement facilities which includes walking. Walking apparently is a good way to "heal" someone's loss. Richard Davis has given them a copy of our walks programme. Walks to start from the Hospice to be considered.

#### **5b Footpath Secretary's Report**

- Bob Frewin's report was printed in the newsletter. He had nothing more to add.

Richard Davis thanked Bob Frewin for all the hard work that he and his team do.

#### **5c Treasurer's Report**

- Accounts were distributed prior to the meeting and were available if required on receipt of a stamped address envelope.
- Report attached.
- Brian Witcombe thanked Steve Priddey for all of his Auditing work. He also thanked Richard Davis, Mike Garner, Ann Adams and Sally Davis for their financial input.

The reports 5a, 5b, and 5c were accepted and this was proposed by Bernard Smith and seconded by Patrick Marks.

## 6. Election of Officers and Committee Members

Officer	Nomination	Proposed	Seconded	
Group Chairman	Richard Davis	Andrew Hawkins	Sarah Booth	
Vice Chairman	Mike Garner	John Geoghegan	Brian Ruther	
Hon Secretary	Andrew Hawkins	Bernard Smith	Janet Williams	
Hon Treasurer	Brian Witcombe	Diana Davis	Angela Marks	
Membership Secretary	Mike Garner	)		
Newsletter Editor	Sally Davis	)		
Joint Website Editor	Mike Garner	)		
Joint Website Editor	Sally Davis	)	Block Vote	
Walks Programme Coordinator	Mike Garner	)	Colin Boosey	Brian Witcombe
Publicity Officer	Vacant	)		
Committee Members	Diana Davis	)		
Area Council Rep's	Penny Fernando	)	<u>Footpath Support Group</u>	
Footpath Chairman	Bob Frewin	)		
Footpath Secretary	Bob Frewin	)	Block Vote	
Footpath Vice Chairman	Vacant	)		
Footpath Minutes Secretary	John Corry	)	Bernard Smith	Andrew Hawkins
Committee Members	Penny Fernando	)		
	John Clayton	)		
Block Vote				
	Richard Davis	)	Brian Ruther	Diana Davis
Walks Collectors	Enid Sutcliffe	)		
	Ann Adams	)		
	John Geoghegan	)	Block Vote	
	Jacqui Pycroft	)	Angela Marks	Bernard Smith
	Olivia Gunn	)		
	Karen D'Amico	)		

Mike Garner thanked Anne Eamer for all of the work she has done over the years. Ann is standing down as a Walks Collector

## 7. Appointment of Hon Independent Examiner (Auditor)

- Steve Priddey to continue as the Auditor.

Proposed by Andrew Hawkins and Seconded by Richard Davis.

## 8. Motions Received by the Due Date

There were no Motions.

## 9. Any Other Business

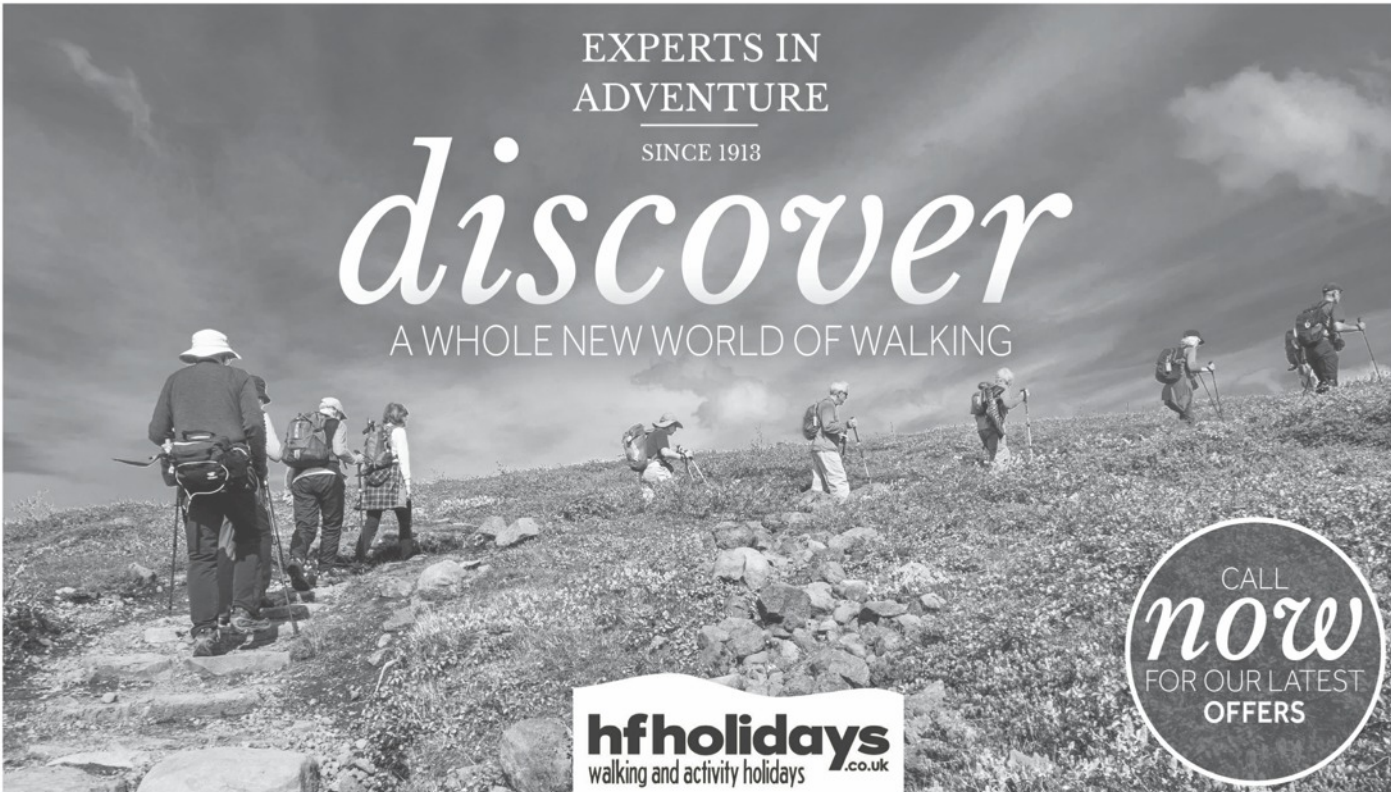
- Bernard Gill (from Area) gave a short talk about what Area do and why they exist. Topics mentioned:
  - Membership - the amount of members in the whole of Gloucestershire have gone down by 17.
  - Pathwatch - where people can report issues with footpaths. These get fed

back to County Councils.

Railway level Crossings – a lot of footpaths are closing or in danger of closing because they go over level crossings. Network Rail want these ○ footpaths closed down. There are a lot of these in East Anglia, as of yet none in Gloucestershire are in danger. Ramblers are fighting these closures. There have been articles on this topic in the Ramblers Walk magazine.

- Lost Ways – any footpath not deemed a Public Right of Way (PROW) any 2026 will be lost forever. DEFRA has stated that “white roads” are not deemed PROW and therefore could be lost.
- Bikes – Should they be ridden on public footpaths?
- Bernard Smith asked if the Committee could discuss if people with cars could give lifts to start of walks to people who do not have cars. **(this will be discussed at the next Committee Meeting in Jan 2018).**
- Heather Garner gave thanks to everyone who made the cakes..
- Angela Marks asked if there was a need to submit walks so far in advance and because of this Patrick and Angela Marks cannot commit to any dates.
- Colin Boosey mentioned that BBC Countryfile featured in a recent episode of the Great British Ramble to raise money for Children in Need. He asked if in the build up to next year’s Children in Need if we could collect money on walks that were organised. **(this will be discussed at the next Committee Meeting in Jan 2018).**

There being no other business the Chairman closed the meeting at 14:20.



EXPERTS IN  
ADVENTURE  
SINCE 1913

# discover

A WHOLE NEW WORLD OF WALKING

**hf holidays**  
walking and activity holidays .co.uk

CALL  
*now*  
FOR OUR LATEST  
OFFERS

HF Holidays have been creating walking and activity holidays since 1913. Combine healthy exercise in areas of outstanding beauty, with superb accommodation, good food and the company of a small group of like-minded companions. We take care of the food, the itineraries and the accommodation, letting you relax and enjoy the best that every area has to offer.

**Call** 0345 470 7558 | **Visit** [hfholidays.co.uk](http://hfholidays.co.uk) | **Quote** WALKING



## **CHAIRMAN'S REPORT FOR THE YEAR 2017/2018**

Another good year for South Cots. Another excellent programme of walks, thank you Mike, Collectors and Leaders, Sally producing News Letters and organising the Annual Lunch, Ann with two brilliant holidays, Bob and the Footpath Committee, the main committee. But.....

Have you ever felt that you were stuck in a rut? Well that's the way I feel about South Cots at the moment. Maybe I have been Chairman for too long. Many organisations put a time limit on periods of office and our own Area restricts officers to three or five years. No, I am not thinking of resigning or anything quite as dramatic but I do feel that some new blood is needed in the running of the Group. We need two or three (or more) new members on the Committee, initially to see what happens but with a view to taking over some of the posts, and, perhaps, to inject new ideas and direction into the Group.

Mike is overworked and needs help. He runs the website, is Membership Secretary and puts the walks programme together. Over the last few months he has been overseeing our compliance with GDPR, a difficult task not helped by the lack of guidance and help from above. He is currently struggling with a new system to use for communication with members. Sally has taken some of the burden from him but we still need somebody, preferably computer literate, to help in other areas.

Our membership numbers continue with their slight decline, something which has not happened for many years. It would be nice to have somebody looking at possible publicity opportunities for us. We do need to raise our profile a bit and at least let the people of Stroud and the rest of our Group area know that we exist. The Festival of Winter Walks, after much consideration, is to continue but with the focus being more of a national publicity opportunity, but also to include possibly encouraging those who suffer from loneliness who might welcome a chance to meet and involve themselves with others through Ramblers. Loneliness is a modern problem giving many different organisations food for thought. Can we help?

A slightly different Chairmans Report this year but one which I hope may inspire some of you to step up and help.

*Richard - Chairman*

## **FOOTPATH SUPPORT GROUP REPORT**

One of the main tasks we perform is to investigate footpath problems reported to us by our members and by the general public. The number of such problems has been fairly consistent from one year to another at about the 60 mark, with roughly a third of them concerning stiles. The remainder comprise an assortment of issues: cropped-over paths, lack of waymarks, padlocked gates, broken bridges and intimidating animals to name a few.

What surprises me a little is that we rarely have the same footpath reported by different people, even over the course of a year. One might conjecture that this is because the problems are being fixed promptly by the council but the size of our outstanding case list suggests that this is not so. Whatever the reason, it does mean that we get the opportunity to visit a lot of different locations during our investigations.

We continue to scrutinize new planning applications for possible effects on footpaths although the number of these requiring a site visit has diminished to 7, less than a half of what it was last year. I suspect this is just a temporary blip. The number of changes to the path network (diversions etc.) has increased slightly to 9.

Some of you may be aware that Seven Trent Water is laying a new pipeline from Brookthorpe to Minchinhampton Common via Stroud Green, Ebley and Selsley. This is to increase the resilience of the supply network and is scheduled to be completed by November 2019. A number of footpaths will be closed temporarily to accommodate the work.

Finally the GCC rights-of-way team transferred back in-house on 1<sup>st</sup> April, a year before the outsourcing contract was due to terminate. The move seemed to go a lot more smoothly than did the original transfer to Amey so let's hope they don't try again in a few years' time.

*Bob*

## TREASURER'S REPORT by Brian

**Accounts:** Our finances remain in fine fettle. We have over a hundred pounds in the Holiday Account even after paying £100 deposit for the next Annual lunch. There is also almost four thousand in the General Account thanks to profits over the years from the walks books. Our annual running costs are almost met by profits from advertising on our web pages so we continue to relinquish any allocation from central Ramblers funds. More detail will be presented at the AGM in November so that is all I will say about our bank balance. Instead I want to mention another issue.

**Electronic Banking:** In order to encourage electronic banking, our bank, the Unity bank, is to introduce a charge of 30p for crediting each cheque or cash amount to our account and I am afraid this means that this cost will have to be passed on to you if you make a payment in this way. For example, if you elect to pay for your Annual lunch by sending Sally a cheque, you will not only have to pay the postage but also you will have to add 30p to the amount of the payment.

Most of you know that electronic payment becomes very straightforward once you have done it once or twice. You know that you just click on "payments or transfers" in your electronic bank account and then insert the name of the account you wish to transfer money to, the account number, the sort code and a reference, usually your name perhaps with an invoice number. The first time you make a payment to a given account, you are usually telephoned with number to help ensure security. This process is familiar to most and I would encourage others to take up the challenge. However, I am aware that some are uneasy with the process and a few do not own computers. For these people I am afraid the only answer is to ask a friend to help out if they wish to avoid the extra charge.

When you do make payments, ensure you double check that the details below are correct and remember it is **imperative that you add your name** to the reference so that the organiser of the event such as Sally and I, the treasurer, know who the payment is from. The bank details you will need are below:

**Bank:** Unity Bank  
**Account number:** 20240918.  
**Bank sort code:** 608301.  
**Account name:** South Cotswold Ramblers Holiday Account.  
**Reference:** eg YOUR NAME lunch

---

## **COME WALKING WITH THE SOUTH COTS. A CHOICE OF 41 WALKS!**

### **WE LOOK FORWARD TO SEEING MEMBERS AND VISITORS IN OUR SPECTACULAR COUNTRYSIDE**

**NON MEMBERS** - You are very welcome to walk with South Cotswold Ramblers Group up to 3 times. Just turn up on the day. Ring the leader first if you have questions. We hope you will then join us at [www.ramblers.org.uk](http://www.ramblers.org.uk) or with a leaflet from Mike. Quote South Cotswold if you wish to be in our Group. You can then walk with any Ramblers' Group in Great Britain.

#### **OUR WALKS ARE LISTED ONLINE HERE**

<http://tinyurl.com/SCRWalks> with maps. **WHAT TO BRING** Bananas are popular as a snack, and bring plenty of water. On day walks you are advised to bring food, even if planning a pub lunch, in case the pub is closed. Wear strong footwear. Bring waterproofs and/or warmer clothing, a whistle and your own simple first aid kit. Remove muddy boots in pubs/churches.

**PLEASE do not walk ahead of the leader unless asked.**

**BACK MARKER** Most parties will have a back marker appointed for the walk. Please inform this person if you need to drop behind for a comfort stop, and tell them when you catch up.

#### **HOW HILLY IS THE WALK?**

**Terrain 0** Level. **Terrain 1** Not much climbing.

**Terrain 2** Hilly and level mix. **Terrain 3** Hilly.

**PACE** Most of our walks are of **Moderate** pace, averaging 2 mph with stops. Monday walks at 1.5mph are all **Leisurely**.

**RING** the leader if you are in doubt, especially if you haven't walked recently. Perhaps try a shorter walk or two first.

**OVERSEAS VISITORS** are very welcome on any of our walks.

**ALL MESSAGES** on our website will show any walk changes or additional information (plus plenty of other news). Please check, especially if travelling a distance, at

[www.southcotswoldramblers.org.uk](http://www.southcotswoldramblers.org.uk)

**DOGS** - Sorry, registered assistance dogs only.

#### **IMPORTANT - KEEPING TOGETHER, ESPECIALLY IN A WOOD**

All members of larger parties are asked to help by keeping a look out behind them. If the people behind you are in danger of losing touch, please pause and tell the people in front of you to wait as well. One way is to give a long blast on your whistle.

**ADVERSE CONDITIONS** Leaders may decide to cancel or shorten the walk, taking into account everyone's health and safety. Please contact them if in doubt or see our website.

**\* 37 VOLUNTEER LEADERS, GREAT STUFF! \***

**THE RAMBLERS ASSOCIATION** is a registered charity (England & Wales no 1093577, Scotland SC039799) and a company limited by guarantee in England and Wales (no 4458492) Registered office 2nd floor, Camelford House, 87-90 Albert Embankment, London SE1 7TW.

*ALL LEISURE ACTIVITIES have inherent hazards associated with them including rambling. In spite of participants' safety always being the paramount concern, accidents will occasionally occur. It is important that each person appreciates their responsibility to identify hazards and take all reasonable steps to eliminate or minimise the potential for accidents. © South Cotswold Ramblers 2018*



**Sat 3 Nov A Trail of Ponds, Speeches and Sculptures**  
**Moderate 9.5m** Start 10:00 Est finish 15:00 Good paths and tracks around Forest of Dean incorporating Cannop Ponds, Gloucestershire Way, Family Cycle Trail and a small part of the Sculpture Trail. Terrain 2 Hilly / level mix. Packed lunch. **Leader - Andrew H 01452 857958 on day 07900 390351** Meet 09:50 Beechenhurst Visitor Centre P&D £5 (GL16 7EL) L162/OL14 SO614120 **Maps:** <https://tinyurl.com/mapBeechenhurst>

**Mon 5 Nov Alight on the Beacon** **Leisurely 4m**  
Start 10:30 Est finish 13:00 Cotswold Way, and all around the Beacon. Terrain 1 Not much climbing, and no stiles. Please pre-order pub lunch. **Leaders - Mike and Heather 01453 873625 on day 07749 282087** Meet 10:20 Royal William A46. Please park at top of CP behind pub, not on A46. (GL6 6TT) L162/E179 SO878127 <http://tinyurl.com/mapRoyalWilliam>

**Wed 7 Nov Tuns of fun in Chedworth** **Moderate 5.5m**  
Start 10:00 Est finish 13:00 Church, airfield, villa, Listercombe Bottom, Monarch Way. Terrain 2 Hilly and level mix. Pub opening mid-October - check Message board nearer date. **Leaders - Sally and Ros 01453 872729/01285 239054 on day 07818 425088** Meet 09:50 Seven Tuns car park if using, or on road nearby. Pub is near church. (GL54 4AE) L163/OL45 SP052120 <https://tinyurl.com/mapChedworth7Tuns>

**Sat 10 Nov Don't Forget Australia** **Moderate 7.3m**  
Start 10:00 Est finish 14:00 Leighterton via Westonbirt Village and Willesley, back along Monarch's Way. Terrain 1 Not much climbing. Many stiles. Picnic. **Leaders - Peter and Sue 01453 860797 on day 07854 634090** Meet 09:50 Westonbirt narrow side road (going north to south, see map) linking Bowdown Road to A433 near Hare & Hounds Hotel. (GL8 8QJ) L162/E168 ST861905 <http://tinyurl.com/mapWestonbirt-side-rd>

**Wed 14 Nov Over the hills and back up the valley** **Moderate 5.8m** Start 10:00 Est finish 13:15 Over Uley Bury and Cam Long Down to Coldharbour and Rockstowes then back up the valley. Terrain 3 Hilly. Pre-order food. **Leaders - Peter and Sue 01453860797 on day 07854634090** Meet 09:50 for 10:00 Uley, Old Crown. Park on road by Church or use pub CP at rear if using after. (GL11 5SN) L162/E168 ST792985 <http://tinyurl.com/mapUleyOldCrownCP>

**Sat 17 Nov Pre AGM preamble** **Moderate 5m**  
A walk to psych us up for the AGM. Terrain 2 Hilly / level mix. Bring a picnic to eat after the walk and before AGM. **Leader: Sally 01453 872729 on day 07818 425088** Meet 09:50 for 10:00 Rodborough Tabernacle CP - from Stroud, just after cattle grid turn R off road leading up towards Fort signed United Reformed Church then downhill for 500 yds. (GL5 3UJ) L162/E168 SO845040 <http://tinyurl.com/mapRodboroughTab>

**Mon 19 Nov Bisley Again !!!!!** **Leisurely 3.8m**  
Start 10:30 Est finish 12:45 Bear Inn (Bisley) Copsgrove, Toadsmoor Wood, Fidges Lane, Nashend, Bear Inn. Terrain 2 Hilly and level mix. Pre-book lunch. **Leaders - Brian and Ann 01452 770510 on day 07770 895035** Meet 10:20 Bisley, The Bear CP or street parking if not eating/drinking (GL6 7BD) L163/E179 SO903060 <http://tinyurl.com/mapBisleyBearCP>



**Wed 21 Nov Can we see the Folly?** **Moderate 6m**  
Start 10:00 Est finish 13:00 Towards Somerset Monument, Cotswold Way, Kilcott Valley, Alderley, back to Hillesley. Terrain 1 Not much climbing. Lunch available at Fleece Inn, please pre-book. **Leader: Derek T 01454 218691 on day 07711 445395** Meet 09:50 Fleece Inn Hillesley, park pub CP or in village. From A46 turn R, through Hawkesbury Upton to Hillesley. (GL12 7RH) L162/E167 SO770897 <http://tinyurl.com/mapHillesleyFleece>

**Sat 24 Nov The variations of Paul** **Moderate 6m**  
Start 10:00 Est finish 13:00 Cleeve Common, Postlip, Cockbury, Prescott, Nottingham Hill. Terrain 3 Hilly. **Leaders - Jill and Sue 01242 255994 on day 07815 786467** Meet Cleeve Hill Quarry CP. From B4632 turn to Cleeve Golf Club. Don't use their CP. Continue through gate, follow parking signs. (GL52 3PW) L163/E169 SO989271 <http://tinyurl.com/mapCleeveHillQCP>

**Wed 28 Nov Amberley to The Butts and back** **Moderate 5.7m** Start 10:00 Est finish 13:15 Past The Bear, over Rodborough Common and eventually down to the cycle track. Climb back up past Dunkirk Manor. Food available at Black Horse, may need to pre-book. Terrain 2 Hilly and level mix. **Leader - Ann A 01453 839089 on day 07931 114439** Meet Amberley by war memorial on common. (GL5 5AA) L162/E168 SO851016 <http://tinyurl.com/mapAmberleyWM>



**Sat 1 Dec Into the woods Moderate 6m**  
Start 10:00 Est finish 13:00 A lot of woodland walking. Standish Wood, Scottsuar Hill and Stockend Wood. Terrain 3 Hilly. One long hill. Two shorter ones. Poss. muddy. **Leader - Colin B A 01453 872349 on day 07717 317510** Meet 09:50 for 10:00 Shortwood CP. Pay and display for non NT members. (GL6 6PP) L162/E179 SO831086 <http://tinyurl.com/mapShortwoodCP>

**Mon 3 Dec Cotswold Way and many woods Leisurely 4.5m**  
Start 10:30 Est finish 13:00 From Wotton via Conygre Wood, Cotswold Way, Westridge Wood to Monument and back via Brackenbury Ditches, Wotton Hill. Terrain 2 Hilly and level mix. No stiles but could be a bit muddy in December. Pubs and cafes in Wotton-under-Edge. **Leader - Colin B K 01453 843716 on day 07525453911** Meet 10:20 for 10:30 Wotton-under-Edge, Auction Rooms CP. Go up Tabernacle Pitch and just past the graveyard turn R. You will see two drives, so take the left narrower one to emerge into a large CP. (GL12 7EF) L162/E167 ST75559350 <http://tinyurl.com/mapWottonAuctionCP>

**Wed 5 Dec Walk the Royal Way Moderate 5.2m**  
Start 10:00 Est finish 13:00 Leighterton to Tresham and back via Boxwell Court and the Monarchs Way. Terrain 1 Not much climbing. Meals and refreshments available at the Royal Oak. Pre-Booking not required. **Leader - Ray W 01453 547213** Meet 09:50 for 10:00 Leighterton, Royal Oak CP. Park considerably in village if not using pub. (GL8 8UY) L162/E168 ST823912 <http://tinyurl.com/mapLeighterton>

**Sat 8 Dec Royal Flour and Thoroughbreds Moderate 8m**  
Start 10:00 Est finish 14:30 Long Newnton, Shipton Mill, Escourt Park. Terrain 2 Hilly and level mix. Bring a packed lunch. **Leader Olivia - 01453 751716** Meet 09:50 Tetbury old station CP (free). (GL8 8DQ) L162/E168 ST893933 <http://tinyurl.com/mapTetburyOldStation>

**Wed 12 Dec I'll meet yew there Moderate 9m**  
Start 10:00 Est finish 15:00 Hilly countryside to the west of Painswick. Terrain 3 Hilly walk with mud and exposure to the wind. Bring coffee, cakes and picnic. **Leader Franceska - 07582 372711** Meet Painswick Walkers CP, off B4073. (GL6 6RR) L162/E179 SO867104 <http://tinyurl.com/mapPainswickWCP>

**Sat 15 Dec Over the hill and far away Moderate 6m**  
Start 10:00 Est finish 14:00 Through Hempsted village, passing Lady's Well to reach Gloucester Docks, staying one hour. Returning via the Gloucester Sharpness canal. Terrain 1 Not much climbing. Bring a snack. **Leader John G - 01452 728760** Meet 09:50 Gloucester, Rea Bridge CP. Follow B4008 north past Tesco Quedgeley roundabout and take 2nd L at traffic lights along Merlin Drive. At 2nd roundabout turn R along Elmore Lane West and car park is on the left before the canal bridge. (GL2 4NS) L162/E179 SO805150 <http://tinyurl.com/mapGlosReaBridge>

**Mon 17 Dec Purton Perambulation Leisurely 4m**  
Start 10:30 Est finish 13:00 If it is a wet Autumn then it will be a walk along the canal, hopefully I will be able to do a lollipop walk to Hinton or a circular one to Halmore and back. **Leader Ray C - 01453 811545** Meet 10:20 Purton opp. Church. (GL13 9HS) E167/L162 SO692041 <http://tinyurl.com/mapPurtonCP>

**Wed 19 Dec A two valleys walk Moderate 6.5m**  
Start 10:00 Est finish 14:00 A walk through Slad and Painswick valleys. Terrain 3 Hilly. Might be muddy in places. Bring a snack. **Leader Colin B A - 01453 872349 on day 07717 317510** Meet Painswick Starnages Ln CP pay & display, £1.85 5 hrs (GL6 6UU) L162/E179 SO865095 <http://tinyurl.com/mapPainswickPayCP>

**Sat 22 Dec Taking a leaf out of John's book Moderate 4m**  
Start 10:00 Est finish 13:15 From Cainscross along canal to Waitrose then an hour or so to wander around Stroud farmer's market, Shambles market and have a coffee. Back along the river bank and cycle track. Terrain 1 Not much climbing. Fish and chip shop and Chinese takeaway by CP. **Leader Ann A - 01453 839089 on day 07931114439** Meet Cainscross CP opposite Tricorn House top end. (GL5 4JH) L162/E168 SO834051 <http://tinyurl.com/mapCainscross>

**Sat 29 Dec Towpath to the sales! Moderate 5m**



Start 10:00 Est finish 13:15 Towpath along Kennet and Avon canal to Pulteney Bridge in Bath. You will then have one hour for shopping/sightseeing/coffee. Back via Sydney Gardens to towpath to start. **Leader Derek T - 01454 218691 on day 07711 445395** Meet George Inn CP, Bathampton. Park away from pub. A46 to Bath, take Bath exit to roundabout at top, first L along London Road West, next R Mill Lane across toll bridge (80p one way). George Inn is on R after 2nd bridge. (BA2 6TP) L155 ST776664 <https://tinyurl.com/mapBHGeorgeInn>

**Mon 31 Dec Chavenage Green to Beverston Leisurely 3.5m**  
Start 10:30 Est finish 12:30 A circular walk across farm land to Beverston Church and Castle. Terrain 1 Not much climbing. **Leader - Margaret T 01453 828036 on day 07930 396204** Meet Chavenage Green (GL8 8XS) L162/E168 ST865957 <http://tinyurl.com/mapChavenageGreen>



**Wed 16 Jan Over Robinswood Hill, service included**  
**Moderate 6.5m** Start 10:00 Est Finish 14:30 Despite being close to the city, a mainly rural walk. Up to the summit of Robinswood Hill with great views, then to Gloucester Northbound Services, returning via the Tuffley side of the hill. Terrain 2 Hilly and level mix. Picnic with chance to purchase at Services. **Leader - Lawrence 07486 415265** Meet Robinswood Hill Country Park CP (free). Reservoir Rd. (GL4 6SX) L162/E179 SO837158

<http://tinyurl.com/mapRobinswoodCountryPark>

**Wed 2 Jan Whitminster Wander Moderate 5.3m**  
Start 10:00 Est Finish 13:00 Fromebridge, Jaxons Farm, Moreton Valence, Moreton Lane, Sandfurlong, Stroudwater Canal. Terrain 1 Not much climbing. Food at Fromebridge Mill carvery, no pre booking needed. **Leaders - Patrick and Angela 01452 616886 on day 07778 662951** Meet Fromebridge Mill on A38 access from A419/A38 roundabout. All can use overflow car park on RH side of drive. (GL2 7PD) E162 OL14 SO770073 <http://tinyurl.com/mapFromebridgeInn>

**Sat 5 Jan Some hundreds are bigger than others Moderate 5.8m** Start 10:00 Est Finish 13:30 Bisley on the quiet side to Throgtham and back. Circular passing through Battlecombe and Sudgrove. Terrain 2 Hilly and level mix. Lunch possible at The Bear or The Stirrup Cup. **Leaders - Tim and Ann 07931 683162** Meet Bisley Recreation Ground free CP, Van der Breen Street (starts opposite Stirrup Cup). (GL6 7BW) L163/E179 Bisley Recreation Ground free CP, Van der Breen Street (starts opposite Stirrup Cup). (GL6 7BW) L163/E179 SO906060 <http://tinyurl.com/mapBisleyRecGround>

**Mon 7 Jan Curious Canals Leisurely 3.9m**  
Start 10:30 Est finish 13:00 Saul Junction, Packthorne, Highfield, Stonepitts bridge Terrain 0 Level. Very easy. Lunch available at Stables Cafe. No pre-booking needed. **Leaders - Patrick and Angela 01452 616886 on day 07778 662951** Meet CP by Stables cafe. Parking fee req. (GL2 7LA) L162 EOL14 SO754091 <https://tinyurl.com/mapSaulStables>

**Wed 9 Jan We've missed the last train! Moderate 7m**  
Start 10:00 Est finish 13:30 Canal, source of Thames, Kemble station, John, Alex and Graham B's cleared path to Jackament Bottom, Monarch Way, Tarlton. Pub lunch possible, please pre-order. Terrain 2 Hilly and level mix. **Leader John G - 01452 728760** Meet Tunnel House Inn, Coates (turn off Coates - Tarlton Rd) (GL7 6PW) E168/L163 SO965006 <http://tinyurl.com/mapTunnelHouse>

**Sat 12 Jan Country Walking Moderate 8m**  
Start 10:00 Est finish 14:30 Painswick and Snobs Farm. Terrain 3 Hilly. Plenty of hills which will be taken at a steady pace. Picnic lunch. **Leaders - Richard and Diana 01453 762373 on day 07973 860669** Meet 09:50 Painswick Walkers CP, off B4073. (GL6 6RR) L162/E179 SO867104 <http://tinyurl.com/mapPainswickWCP>

**Sat 19 Jan Old Hill Fort Moderate 12m**  
Start **09:30** Est finish 16:00 Cotswold Way to Horton, Little Sodbury, Badminton. Terrain 2 Hilly and level mix. Bring a picnic. **Leader - Graham W 01453 885408** Meet Hawkesbury Upton, Village Hall CP, W of Beaufort Arms on opposite side, honesty box donations. (GL9 1AU) L172/E167 ST777870 <http://tinyurl.com/mapHawkesburyUptonVH>

**Mon 21 Jan Historic Cirencester Town and its Park Leisurely 3.5m** Start 10:30 Est finish 12:30 Fascinating walk in historic Cirencester town and a little of its Park. Terrain 0 Level. Many cafes and restaurants in Cirencester. **Leader - Jacqui 01666 826139** Meet Cirencester, The Waterloo CP (charges). (GL7 2PY) L163/E169 SP02650205 <https://tinyurl.com/mapCirenTheWaterloo>

**Wed 23 Jan Curses, Curses Moderate 8m**  
Start 10:00 Est finish 15:00 Uley, Elcombe, Woodmancote, Dursley, Cam Long Down. Terrain 3 Hilly with some steep climbs. Bring a picnic. **Leaders - Jill and Sue 01242 255994 on day 07815 786467** Meet Uley, near Old Crown. Park on road by Church. (GL11 5SN) L162/E168 ST791986 <http://tinyurl.com/mapUley>



**Wed 30 Jan If I were a rich man Moderate 5.7m**  
Start 10:00 Est finish 13:00 Elbury Hill, Swinhay, Bradley Green (views), Hawpark Farm, Abbey Gate. Terrain 1 Not much climbing except for stiles. **Leaders - Mike and Heather 01453 873625 on day 07749 282087** Meet Kingswood, park considerably in village, meet on the Chipping outside Dinneywicks. (GL12 8RT) L162/E167 ST746917 <http://tinyurl.com/mapKingswood>



**Sat 2 Feb Don't Dawdle in Caudle Moderate 5m**  
Start 10:00 Est finish 13:15 Caudle Green, Brimpsfield, Climperwell. Terrain 2 Hilly and level mix. Lunch available at end. **Leaders - Brian and Sheelagh 01453 872220 on day 07761 039595** Meet Foston's Ash CP, Park tightly at far end. (GL6 7ES) L163/E179 SO914114 <http://tinyurl.com/mapFostonsAsh>

**Mon 4 Feb Is it Thursday? No Monday Leisurely 4m**  
Start 10:30 Est finish 13:15 A Thursday evening walk that I have tweaked to make the climb up to Wallow Green seem flatter. Above Nailsworth then flat and downhill finishing through Ruskin Mill. Terrain 2 Hilly and level mix. Please pre-book food. **Leader - Ann A 01453 839089 on day 07931 114439** Meet 10:20 Nailsworth, Egypt Mill CP, far side. (GL6 0AJ) L162/E168 ST850998 <http://tinyurl.com/mapNailsworthEgyptMill>



**Wed 6 Feb Country Walking Moderate 10m**  
Start 10:00 Est finish 15:30 Painswick and Cranham. Terrain 3 Hilly. Bring picnic. **Leaders - Richard and Diana 01453 762373 on day 07973 860669** Meet 09:50 Painswick Walkers CP, off B4073. (GL6 6RR) L162/E179 SO867104 <http://tinyurl.com/mapPainswickWCP>

**Sat 9 Feb Lovely woodland tracks & meadows Moderate 5.1m**  
Start 10:00 Est finish 13:00 Bull Banks, Frome Valley, Edgeworth, Fox Wood, and Sudgrove. Terrain 2 Hilly and level mix. Advisable to prebook at Carpenters Arms before the walk if eating. **Leader: Dave G 01242 862564** Meet Miserden CP next to village shop and school just out of centre of village. (GL6 7JA) L163/E179 SO933089 <https://tinyurl.com/mapMiserdenShop>

**Wed 13 Feb Winter Views of Cam and Dursley Moderate 7m**  
Start 10:00 Est finish 14:30 Mainly on woodland and field paths via Dursley, Upper Cam, Uphorpe, Lower Cam and The Quarry. Some stiles. Some woodland paths are steep, narrow and may be slippery. Terrain 2 Hilly and level mix Bring a packed lunch. **Leader - Karen 01453 545824** Meet 09:50 Stinchcombe Hill public CP (not Golf Club CP) (GL11 6AQ) L162/E167 ST743983 <http://tinyurl.com/mapStinchcombeHillCP>

**Sat 16 Feb Indian but no cowboys Moderate 4.8m**  
Start 10:00 Est finish 12:45 Fostons Ash, Cranham Wood, Cranham Common, Ebworth Centre, and back to Fostons Ash. Terrain 2 Hilly and level mix. Please pre-book lunch. **Leaders - Brian and Ann 01452 770510 on day 07770 895035** Meet 09:50 Foston's Ash CP, Park/double park tightly at back of CP. (GL6 7ES) L163/E179 SO914114 <http://tinyurl.com/mapFostonsAsh>

**Mon 18 Feb To Coombe then a view Leisurely 3.5m**  
Start 10:30 Est finish 13:15 An easy walk down through the town to Marchesi Walk, then level walk to Coombe and Dyers Brook lakes. Followed by one steep climb taken at an easy pace up to Coombe Hill with splendid views following the ridge to Conygre Woods then back down back into town. Please pre-book lunch if staying. Terrain 2 Hilly and level mix. No stiles. **Leader - Chris L 01453 842298 on day 07512 478477** Meet 10:20 Wotton-u-Edge, Royal Oak, Haw St. Park at top end of CP. (GL12 7AG) L162/E167 ST754933 <http://tinyurl.com/mapWottonRoyalOakCP>

**Wed 20 Feb Haresfield and Harescombe Moderate 5m**  
Start 10:00 Est finish 13:00 Haresfield village to Harescombe Church with many stiles, mostly new in last few years. Terrain 1 Not much climbing. Pre-book meal at Beacon Inn PH. **Leader - Olivia 01453 751716** Meet 09:50 Haresfield Beacon and Railway Hotel CP (Haresfield Lane off A38). Park away from pub if not eating. (GL10 3DX) E179 SO812099 <http://tinyurl.com/mapHaresfieldBeacon-R-wayHotel>

**Sat 23 Feb Fairly Flat Frocester Foray Moderate 10m**  
Start 10:00 Est finish 15:00 Frocester Hill, Silver St, Coaley, Frocester, Stanley Downton Terrain 1 Not much climbing. Bring a picnic. **Leader - Alex 01453 826907** Meet 09:50 King's Stanley SDC CP opposite the pub. (GL10 3JD) L162/E168 SO811034 <http://tinyurl.com/mapKingsStanleySDCCP>



**Wed 27 Feb Steve's stroll Moderate 9m**  
Start 10:00 Est finish 15:00 Bisley, Juniper Hill, Edgeworth, Parsons Hill, Miserden, Sudgrove. Terrain 3 Hilly, some steep ascents. Picnic lunch, pub drink stop possible. **Leaders - Jill and Sue 01242 255994 on day 07815 786467** Meet 09:50 Bisley, Windyridge layby Cheltenham Rd. (GL6 7BJ) Maps L163/E179 SO903063 <http://tinyurl.com/mapBisleyWindyridge>





### Sat 22 Sept 2018 - Forest of Dean Ramblers celebrate 40 years!

Seventy current and former members met at Yorkley Community Centre to join in the Group's 40<sup>th</sup> Anniversary – many took a nostalgic damp walk in the forest. It was 27<sup>th</sup> September 1978 that members of Gloucestershire Ramblers Area inaugurated its 2nd group, Forest of Dean Ramblers (Cirencester was 1974).



Ray Short, Susan and Robin Warren, the Founder Treasurer, Secretary, and Chairman, cut the beautiful 40<sup>th</sup> Anniversary Celebration cake.



On display were opening log books, newsletters and photographs from some of the many walks enjoyed by the Group over the 40 years. Current Chairman Peter Robbins & Secretary Jackie Huck welcomed Kate Ashbrook, Chair of Ramblers' Board of Trustees, here with Roger Cox, one of the Group's original walk leaders.

### Sat 15 Sept 2018 – Walking Together

Around 60 walkers, 25% new to ramblers, joined Groups and Clubs from across the Area at Kings Stanley Village Hall for 3- 11 miles walks. GCC Footpaths team were present in the afternoon & Peter Carr, Ramblers Trustee rounded up the day.



#### Diary Dates - AGMs

##### Forest of Dean Ramblers Group

Friday 9th November Yorkley  
GL15 4RS 7pm for 7:30 TBC

##### Cleeve Ramblers Group

Saturday 17th November at  
Southam Village Hall GL52 3NS  
Walk, Bring Share lunch, AGM

##### South Cotswold Ramblers Group

Saturday 17 November 2018 at  
13.00 at Rodborough Tabernacle  
Stroud GL5 3UJ

##### Cirencester Ramblers Group

Sunday 18th November 2018  
9:45 Ampney Crucis Village Hall,  
Main Street GL7 5RY. Walk, bring  
and share lunch. AGM at 1.30pm

##### Gloucestershire Walking Group

Sunday 18th November  
Sherborne Arms, Aldsworth, GL54  
3RB Morning walk. AGM 2pm

##### Gloucester Ramblers Group

Thursday 29th November at Upton  
St Leonards 7pm for 7:30 TBC.

##### North Cotswold Ramblers Group

Saturday 8th December Blockley  
Morning Walk, Soups, AGM TBC

##### Gloucestershire Ramblers Area

Saturday 19th January 2019  
Hosted by Forest of Dean Group  
Catholic Hall, Coleford GL16 8HN  
10:00 for 10:30 Reports & voting  
Bring and share Lunch, short walk

##### GR Area Council meeting

Wed 30 Jan 2019 7:30pm  
Gloucester Room, Premier Inn,  
A38 Twigworth GL2 9PG



### A message from Ramblers Loneliness and Social Isolation

Has walking helped you, or someone you know?

Walk magazine is hoping to put together a feature on how walking can help reduce loneliness and social isolation. A number of women have come forward but it can be difficult for men to discuss what may be a serious issue with life style changes. If anyone feels able to talk, please contact in confidence Richard.Sharp@ramblers.org.uk 0207 339 8521



Ramblers is asking us to contact local MPs to help protect footpaths if Brexit happens  
<https://e-activist.com/page/29037>

### Group Reports

#### North Cotswold Ramblers Group September 2018

Our Group continues to walk every second Saturday in the month with a varied programme and an average attendance of 12-15 people. The summer weather has not always been conducive to walking. On one particularly hot summer Saturday only 3 people turned up for a walk of over 10 miles but it was one of the most enjoyable with wide ranging conversation and great views.

We are always looking out for opportunities to improve the footpaths on our Diamond Way and recently supported an initiative by the Cotswold Wardens to replace a bridge and install a kissing gate in this environmentally sensitive area.



#### Cirencester Ramblers Group

Sunday 9th September walk and Boat trip from Gloucester Quays. 23 members and guests set off the Castle Meads car park for a 5.5 mile walk. Leaving the car park they were very soon in open countryside and eventually reached the River Severn. Gloucester Quays where they had time for refreshment, before a boat trip along the canal.

#### Footpath Maintenance Volunteers

On Saturday 11th August eight volunteers set off to drive to the village of Upton St Leonards to carry on the clearance of the Wysis Way. A friendly resident kindly let us park at his smallholding where we were joined by Mark from Gloucester group.

This was a very bizarre day! We started off by painting some of the posts on the path yellow as the way was very indistinct in this area. Carrying on we came across field full of motorcross races, where we stopped to watch as they flew over some mounds.

Shortly we could see the M5 in the distance and after crossing a bridge, settled for our lunch on a green with Robinswood Hill in sight. We were joined by some very friendly sheep who crossed the road to see what we had for lunch. Then they wandered back and forth across the road, holding up a wedding party.

We retraced our steps back to the start, where the landowner supplied us with a welcome cuppa and biscuits.

If you're interested in helping with maintenance across the county please contact Richard at [footpaths@gloucestershireramblers.org.uk](mailto:footpaths@gloucestershireramblers.org.uk)



(photo of painting a waymark post)

#### Lost Members in recent months

Jonathan Moore, keen walker, always willing to help, passed away just before the end of a GWG walk in July.

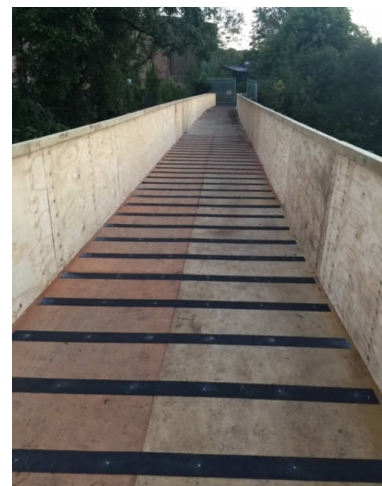
Annie Clement past Area Secretary, Cleeve Member, passed away suddenly in September

Des Smyth Mid-Glos Chair until its closure, and Cheltenham Spa Flexi Group, passed away on holiday in France



## Black Bridge at Lydbrook (Stowfield Viaduct)

The bridge is an important connection between Gloucestershire and Herefordshire and was used by more than 20,000 walkers every year as part of the 136 mile Wye Valley Walk. Unfortunately a Heritage lottery bid by the Wye Valley AONB to reopen it was not successful at this time. Forest of Dean Ramblers, have been part of the steering group to reopen the bridge. The Group welcomes that Gloucestershire County Council and Herefordshire Council have managed to fund some temporary repairs to make passage safe under the bridge and include a scaffolding/boarded walkway.



## A417 Missing Link, The Air Balloon, The Cotswold and Gloucestershire Ways

Many local people want a new A417 built and now. For years ramblers have wanted through traffic taken off local roads so they're crossable and become suitable for all road users.

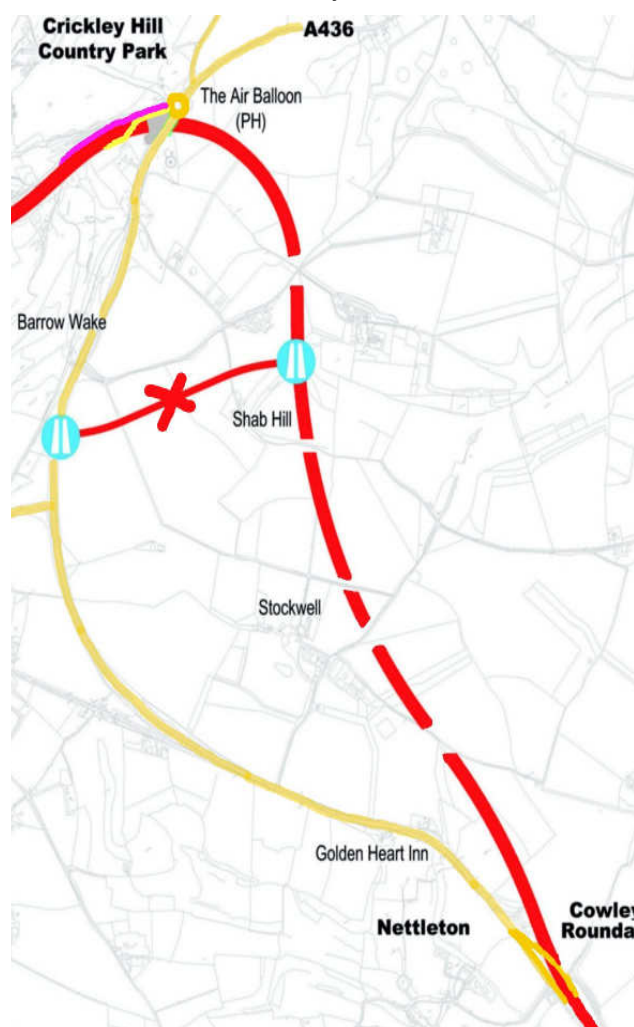
In September ramblers met again with Highways England to discuss simplifying its option 30. Deleting the link road not only saves some countryside, it frees up funds to take the new A417 under the Air Balloon (rather than demolishing it). It was one of the more credible suggestions they'd received.

The map right, shows option 30 in red with an X on the link road. Simplification needs the current A417 (mauve) as an upsip to the roundabout while a new (yellow) downsip takes traffic from the roundabout down to the new road. Below shows the new road (black) passing under the car park of the pub site – note there is a fair amount of green.



The Cotswold Way Association has chosen to support the idea of saving the pub site as a centre for walking alongside the Cotswold Way national trail and the Gloucestershire Way.

Highways England is still considering all responses received.



Satellite image ESRI

Map Highways England

*GDPR- We've taken feedback that our members have a legitimate or contractual interest in receiving newsletters such as GRNews. It saves postage if your Group can use your email address. If Ramblers Central Office has your email, a member newsletter is available and Volunteers can receive a volunteering email. Where relevant, a member's preference settings can be updated at [ramblers.org.uk/my-account](https://ramblers.org.uk/my-account) (Update profile. Contact preferences). Or call Ramblers on 0207 339 8500*

### A page of Mid Week walks for the Gloucestershire Ramblers Area

Gloucestershire Ramblers Area organises a programme of day walks of approx 10-12 miles long, usually mid-week, in the county & neighbouring counties. Why not give us a try (please contact leader beforehand).

Once a member, all our walks are free! (Sorry Registered Assistance dogs only but see [www.fodramblers.org.uk](http://www.fodramblers.org.uk))

Wed 7 Nov 10:00 - 11 miles/17.7 km - Moderate **Guiting Power**  
Park at Guiting Power Village Hall CP (near church) - voluntary donation. (GL54 STX, SP094246)

Walk from Guiting Power to Naunton, along the Wlndrush Way to Bourton-on-the-Water, returning via The Slaughters and the Wardens Way. Picnic.

Contact: Rosie and John, 01684 273746 or 07933 783799 on day

Wed 14 Nov 10:00 - 10miles/16.1 km - Moderate **Malverns**  
Meet British Camp CP (£3.00) (E190) (WR13 6DW, SO763403)

A hilly approx. 10m walk in the Malvern hills with lovely views on a clear day. Picnic lunch.

Contact: Catherine, 01452 559924 or 07456 425880 on day

Wed 21 Nov 10:00 10.8m/18km Mod **Ross Round Mini Circuit**  
Starts at 10:00: Park off A40 on side road outside Weston Inn (NOT in pub CP) OL14. (HR9 7FR, SO632234)

AM - Hilly over Howle Hill and descend down to The Homme. Pub lunch/cafes/or picnic in Ross On Wye.PM- Not so hilly and shorter via Penyard Park.

Contact: Guy, 01242 251412 or 07968 797186 on day.

Wed 28 Nov 10:00 - 10m Mod **A Wander in the Forest of Dean**

Meet Bradley Hill at Bullock's Beech (on minor road between Blackpool Bridge and Soudley). OL14. (GL14 2UQ, SO658098)  
A varied walk on Forest Trails, footpaths, fields and quiet lanes. The route is through woods down to Old Furness Bottom picking up a lane up to Viney Woodside before crossing fields to Viney Hill. Back into the woods towards Yorkley and onto Mallards Pike. The Blakeney Greenway takes us along the valley to Wenford before a steady climb back up to Bradley Hill.  
Contact: Jackie, 01594 564417 or 07767 351190 on day Picnic

Wed 5 Dec 10:00 - 10 miles/16.1 km – Mod **Bisley**

Start Windyridge layby, Bisley. (GL6 7BJ, SO903063)

A walk of hills, valleys and woods going past Ferris Court Farm, The Vatch, Furners Farm, Down Farm and return through Dillay and Calfway Farm. Picnic.

Contact: Susanne, 01453 757212 or 07587 713668 on day.

Wed 12 Dec 10:00 6m Easy **Christmas Lunch and morning walk**

The Old Lodge Inn, Minchinhampton Common, Stroud. E168. Please park outside Golf Club environs. (GL6 9AQ, SO853008)  
A fairly flat easy going walk across and around the common followed by Christmas lunch at The Old Lodge Inn. The lunch menu offers very good contrasting choices. 2 courses @ £19.95 3 courses @ £23.95 . Details on the web-site [www.food-club.com](http://www.food-club.com) or contact organizer Guy by phone or e-mail: [guyvowles@talktalk.net](mailto:guyvowles@talktalk.net). Booking deadline November 25th with £10 deposit and menu choice required to Guy.  
Contact: Guy, 01242 251412 or 07968 797186 on day.

Wed 19 Dec 10:00 10m/16k Mod **Winter Woods Severn Views**

Start at the end of Rosedale Avenue, Stonehouse, near to the railway station. E179 (GL10 2QH, SO810051)

A walk in the South Cotswold Hills. Picnic lunch.

Contact: David P, 01793 771068 or 07824 603711 on day

Moderate- a good level of fitness. May include some steep paths and open country, and may be at a brisk pace.

Strenuous- above average fitness level. May include hills and rough country, and may be at a brisk pace.

Wed 2 Jan 10am 10m **Prinknash Abbey to Centre of Gloucestershire**  
Park at the top of Prinknash Abbey CP. (GL4 8EX, SO880137)

Moderate down up and down some urban. Tea/coffee break at the Centre of Gloucestershire. Picnic lunch near a Roman Villa. From there follow the Cotswold Way around to Coopers Hill & back  
Contact: BernieG, 01242 602024 Prinknash Abbey afternoon tea

Wed 9 Jan 10:00 - 10 miles/16.1 km – Mod **Rodborough**  
Meet Car Park at the top of Rodborough Common (between the Fort and Bear Inn) E168. (GL5 5BP, SO851035)

From Rodborough Common heading towards Bisley and Eastcombe..  
Contact: Andy, 01453 885498 Picnic lunch

Wed 16 Jan 10:00 - 10 miles/16.1 km – Mod **Chedworth**  
Meet at Chedworth (Denfurlong) Farm Shop CP on the right furthest from the shop. OL45/LR163. (GL54 4NH, SP066106)

Walk Lower Chedworth, Fossebridge, Stowell Park, Hampnett, Yanworth, Chedworth Woods, Chedworth. Picnic.

Contact: Anne, 01242 863504 or 07718499523 on day

Wed 23 Jan 10:00 - 10 miles/16.1 km – Mod **Toadsmoor Valley**

Park considerably in Eastcombe Village and meet at the Green opposite the Post Office. E168 (GL6 7DN, SO891044)  
A walk around the Toadsmoor area with some steep ascents and descents plus a few stiles. Picnic.

Contact: Hilary, 01453 753398 or 07503754620 on day

Wed 30 Jan 10:00 - 10 miles/16.1 km – Mod **Uley and Dursley**

Meet on the green outside The Crown PH, Uley. Park carefully on the street. (GL11 5SW, ST791985) A fairly strenuous walk to Owlpen, Virgin Corner's Wood, Cam Peak, Cam Long Down and Uley Bury. Lunch at pub/cafe in Dursley town centre, or bring a packed lunch.  
Contact: Mick, 01453 542082 or 07443 643462 on day

Wed 6 Feb 10:00 - 10 miles/16.1 km – Mod **Nailsworth**

Meet at the Garden Centre, Nailsworth, in the CP near to the entrance off B4041 to Avening. (GL6 0AL, ST854996)  
An undulating walk around villages, valleys and hills surrounding Nailsworth. Picnic lunch. Drinks in the cafe at the end of the walk.  
Contact: Dave, 01452 721792 or 07593 296983 on day

Wed 13 Feb 10:00 - 12 miles/20.1 km – Mod **Andoversford**

Meet at Royal Oak Pub, Andoversford Gloucester Road. Use pub CP if eating/drink, else Station Road, Andoversford GL54 4NB SP024196  
Figure of eight. 7 miles am: Sevenhampton, Soundborough, Shipton. 5 miles pm: Horseland, Foxcote, Upper Dowdeswell .  
Contact: Martin, 07790437908 Picnic or pub lunch Royal Oak

Wed 20 Feb 10:00 10 miles/16.1 km Mod **Painswick and Cranham**

Meet in layby on A46 just north of the entrance to Prinknash Abbey. E179 (GL3 4RX, SO886142)

Circular walk taking in Coopers Hill, Cranham, Painswick Beacon and Prinknash Abbey. Picnic.

Contact: Sue L, 01452 741229 or 07808 116725 on day

Wed 27 Feb 10:00 10.5m/16.9 km Mod **Charfield and Newark Park**

Meet Charfield Village Hall CP. On the corner of Wotton Road (B4058) and Little Bristol Lane. L162/E167 (GL12 8TF, ST722922)  
Charfield, Kingswood, Wortley, Wortley Hill, Newark Park, Tor Hill and Renishaws. 750 feet of ascent. National Trust members please bring membership cards. Moderate to hard.

Contact: Richard, 07512758229 Picnic at Newark Park

Walking boots and warm, waterproof clothing are essential.  
If in doubt about fitness please contact the walk leader beforehand.